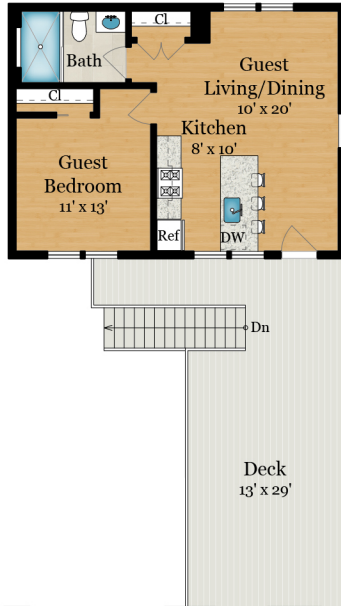


# 2619 WISCONSIN AVENUE, NW

WASHINGTON, DC 20007

## GUEST HOUSE

584 SQ FT



### Total Finished

**Square Footage: 4,606 SQ FT**

Above-Grade: 3,381 SQ FT Below-Grade: 1,225 SQ FT  
Calculated per ANSI Standard Z765-2003

### · Main Residence: 4,022 SQ FT

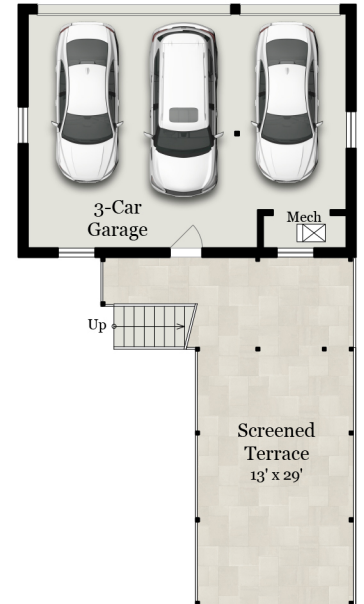
- Main Level: 1,082 SQ FT
- Upper Level 1: 1,100 SQ FT
- Upper Level 2: 615 SQ FT
- Lower Level: 1,225 SQ FT

### · Guest House: 584 SQ FT

### Unfinished Square Footage: 801 SQ FT

- 3-Car Garage: 579 SQ FT
- Mech Room (Lower Level): 107 SQ FT
- Attic Mech Room (Upper Level 2): 38 SQ FT
- Low Ceiling Area (Upper Level 2): 77 SQ FT

**Total Finished & Unfinished  
Square Footage: 5,407 SQ FT**



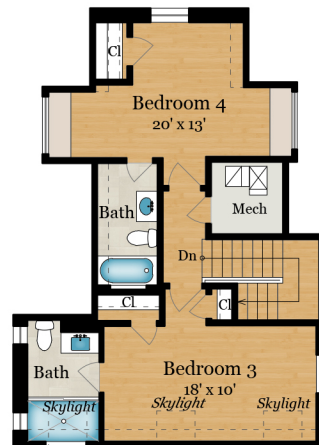
## MAIN LEVEL

Ceiling Height: 8'-10"  
1,082 SQ FT



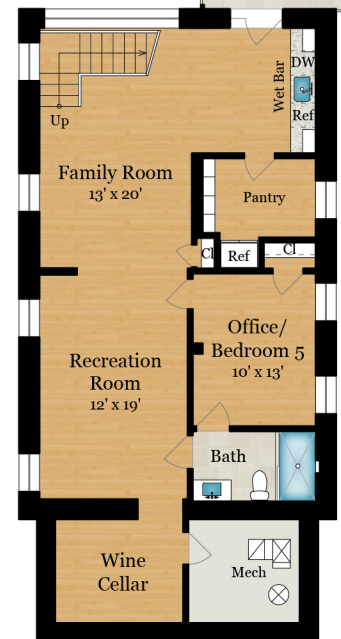
## UPPER LEVEL 1

Ceiling Height: 8'-0"  
1,100 SQ FT



## UPPER LEVEL 2

Ceiling Height: 8'-0"  
615 SQ FT



## LOWER LEVEL

Ceiling Height: 8'-2"  
1,225 SQ FT



Rendering by Arcdimension

All measurements are approximate. While deemed reliable, no information on these floor plans should be relied upon without independent verification.

Presented by Jonathan Taylor, TTR Sotheby's International Realty

Tel: 202.276.3344

Email: jtaylor@ttrsir.com

# 2619 WISCONSIN AVENUE, NW

WASHINGTON, DC 20007

## SITE PLAN

